



Elevation A

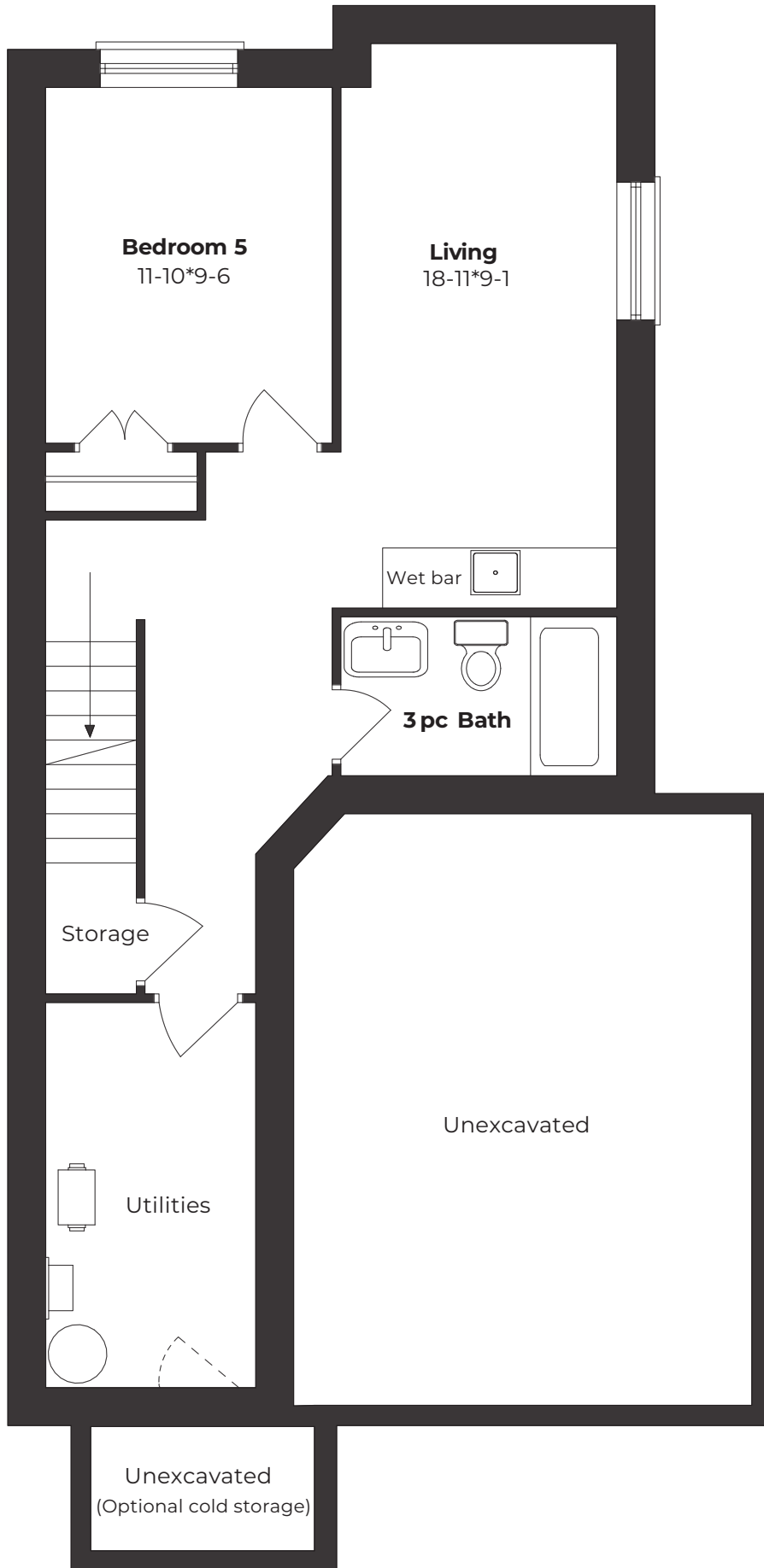
<p>Clean + Modern Build Design</p>	<p>Upscale Stone & Stucco Exterior Available</p>
<p>9' Main Floor Ceiling Height</p>	<p>Full Suite of Interior Finishes</p>



Elevation B

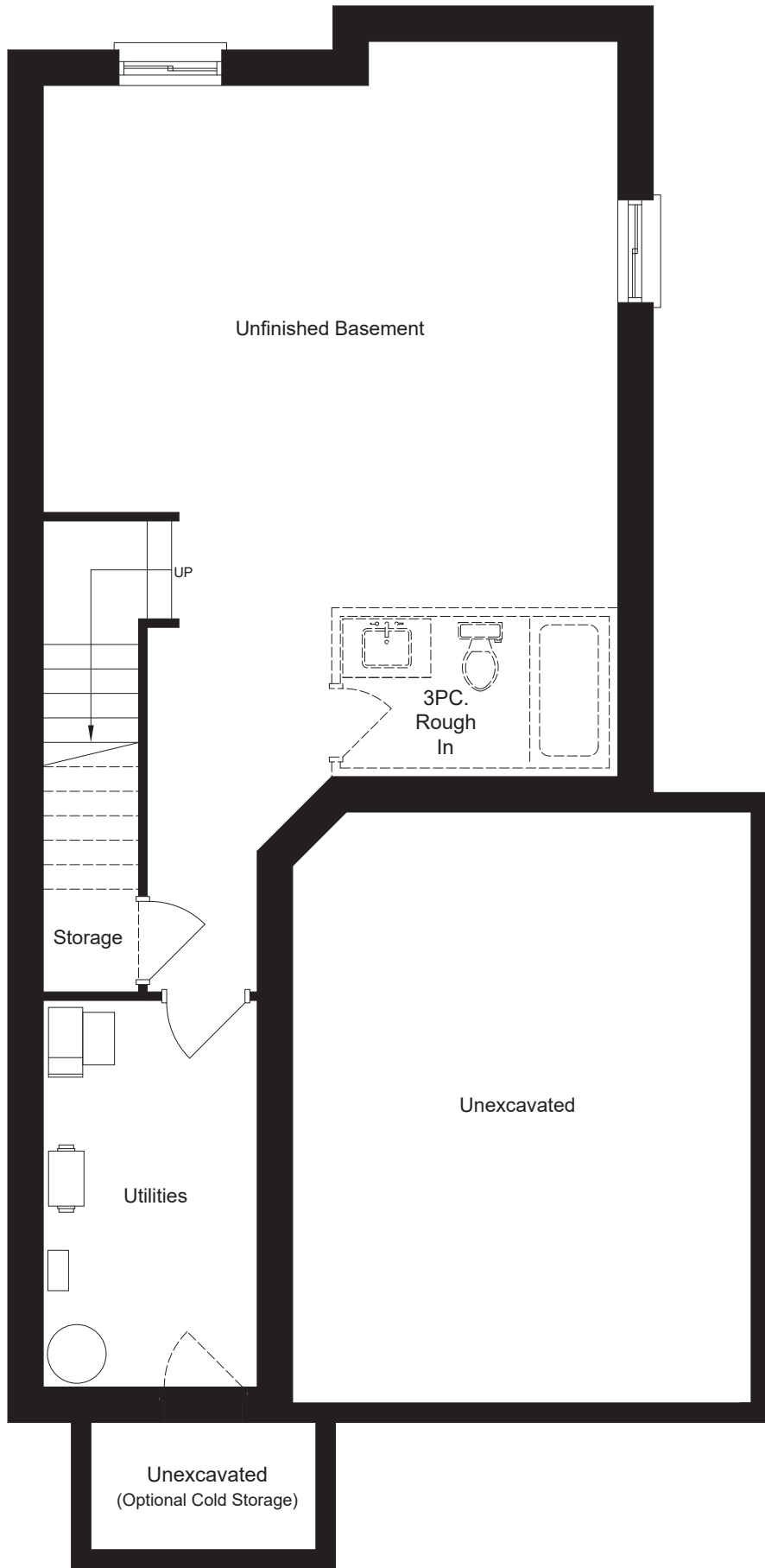
- * 4 Bedrooms
- * Oversized Garage
- * Two Elevations
- * 2.5 Bathrooms
- * Luxury Vinyl
- * Master Bed Ensuite
- * Basement Rough-in
- * Covered Porch
- * Kitchen Island

* Optional Finished Basement adds a 5th bedroom and 3 piece bathroom



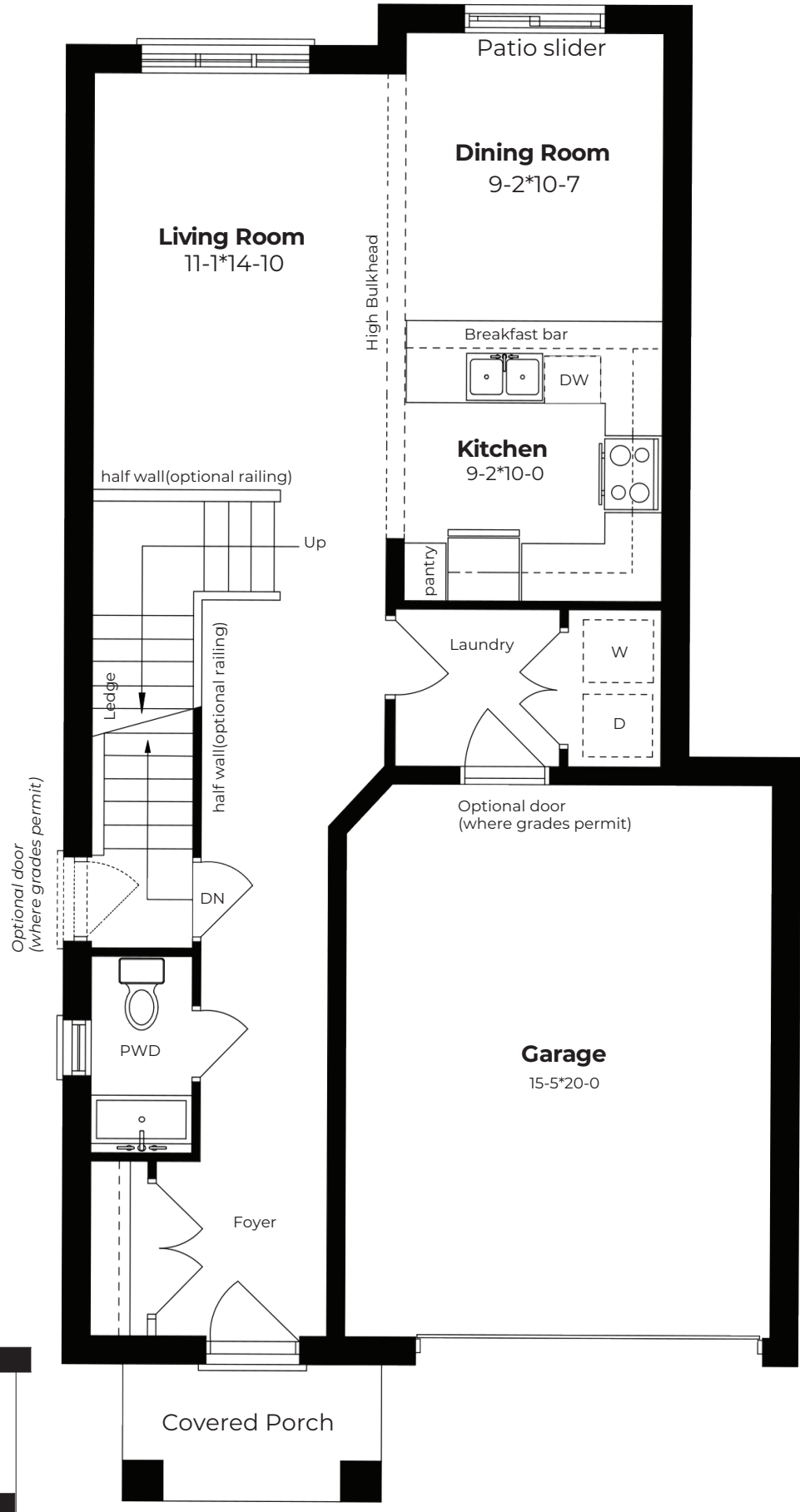
BASEMENT

OPTIONAL FINISHED

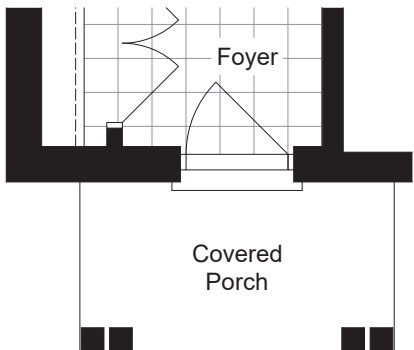


BASEMENT

UNFINISHED

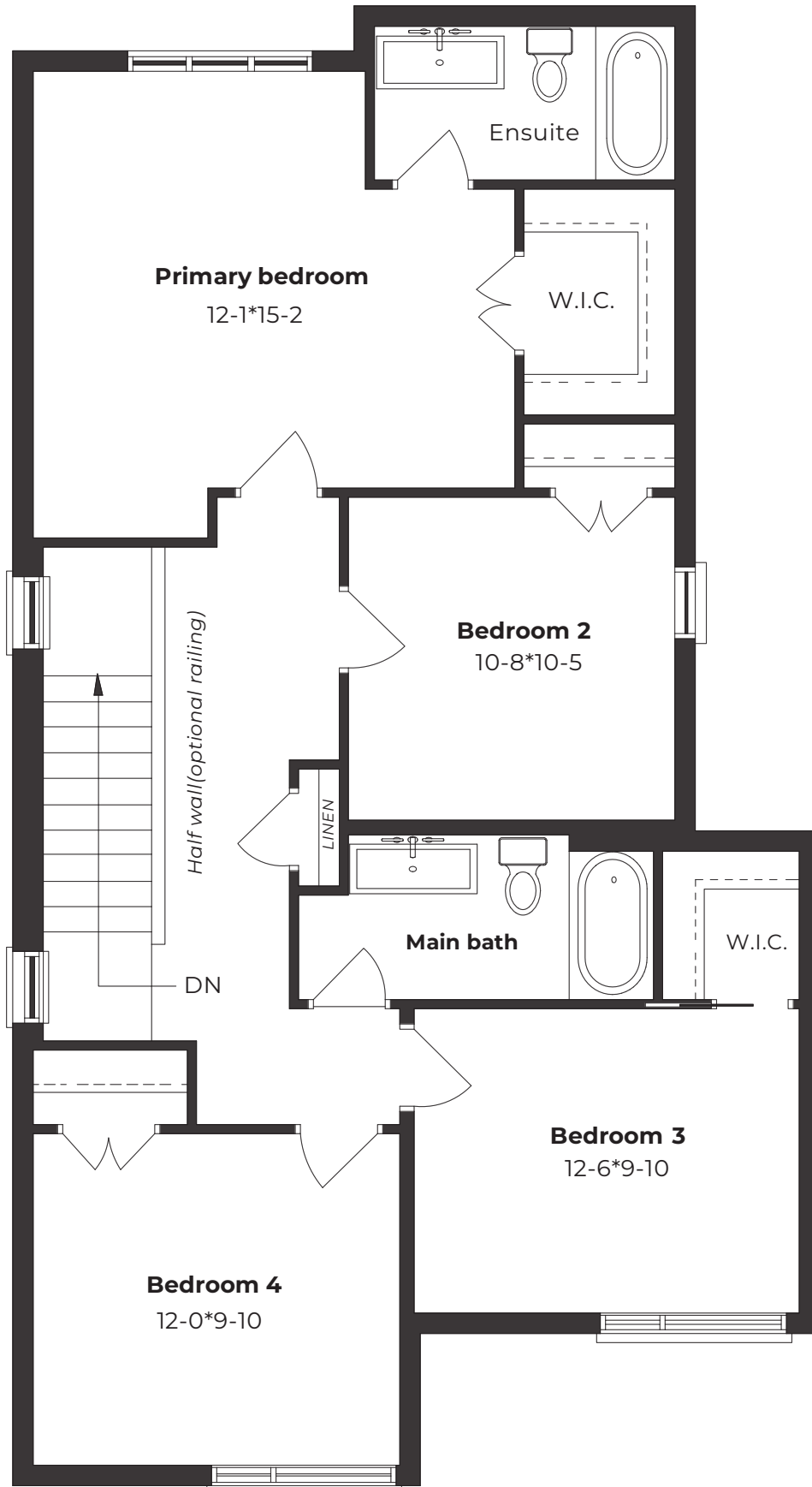


Covered Porch Variation
ELEVATION B



MAIN FLOOR

ELEVATION A ELEVATION B



SECOND FLOOR

ELEVATION A

ELEVATION B