

Shambhu

"One Who Bestows Prosperity"

1,891 sqft
4 bed + 2.5 bath
5 bed + 3.5 bath
(with optional finished basement)



Shree Homes inc
LONDON • ONTARIO



Elevation A



Clean + Modern
Build Design



Upscale Stone & Stucco
Exterior Available



9' Main Floor
Ceiling Height



Full Suite of
Interior Finishes



Elevation B

- * 4 Bedrooms
- * 2.5 Bathrooms
- * Basement Rough-in

- * Oversized Garage
- * Luxury Vinyl
- * Covered Porch

- * Two Elevations
- * Master Bed Ensuite
- * Kitchen Island

* Optional Finished Basement adds a 5th bedroom and 3 piece bathroom



Shree Homes inc
LONDON • ONTARIO

519.601.6761

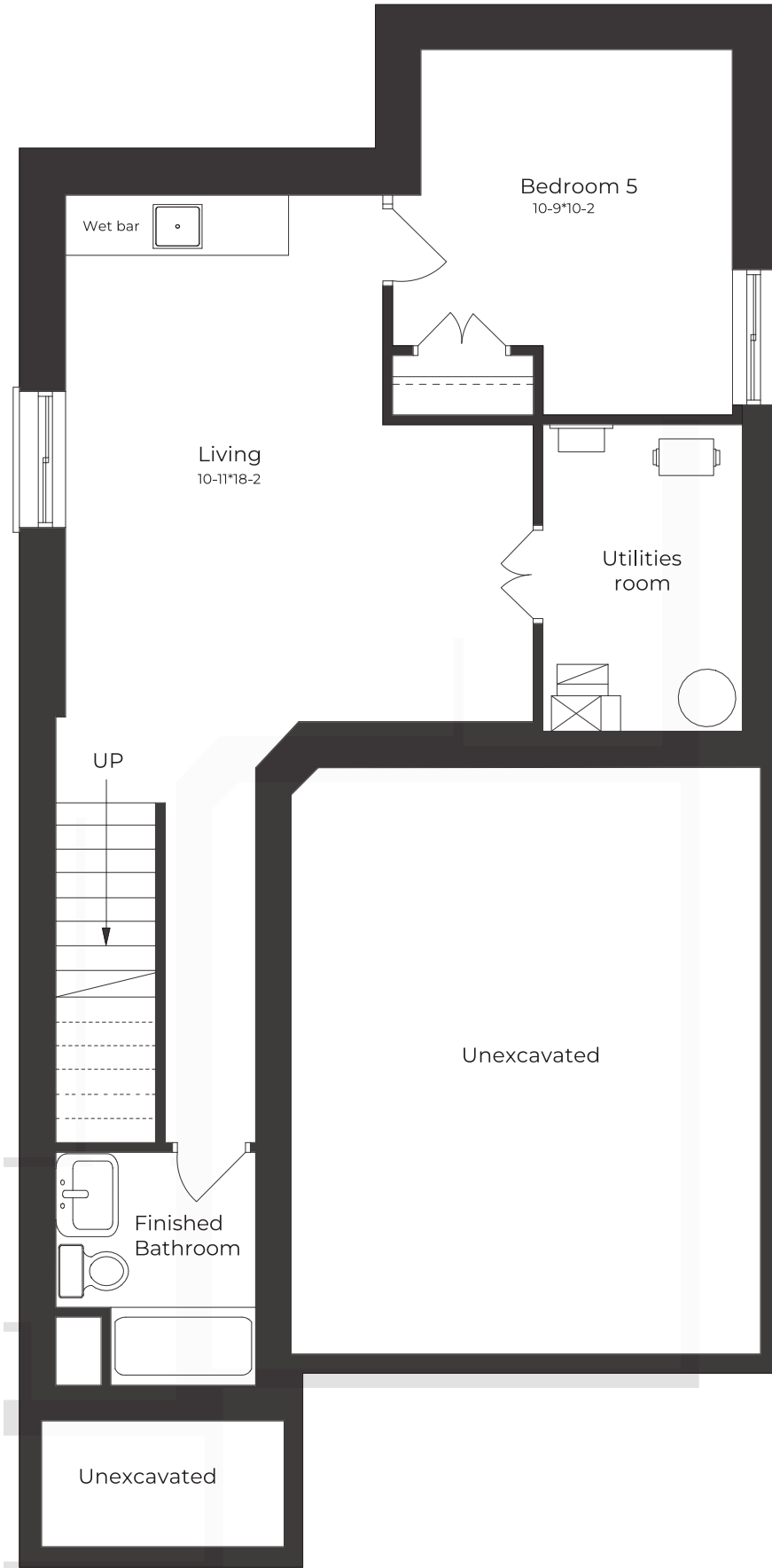
| shreehomes.ca

| sales@shreehomes.ca

All drawings are for presentation purposes only. Actual size and product may vary. All measurements are approximate and subject to change without notice. Actual usable floor space may differ from stated floor area. Columns, bulkheads and boxouts may not be shown.

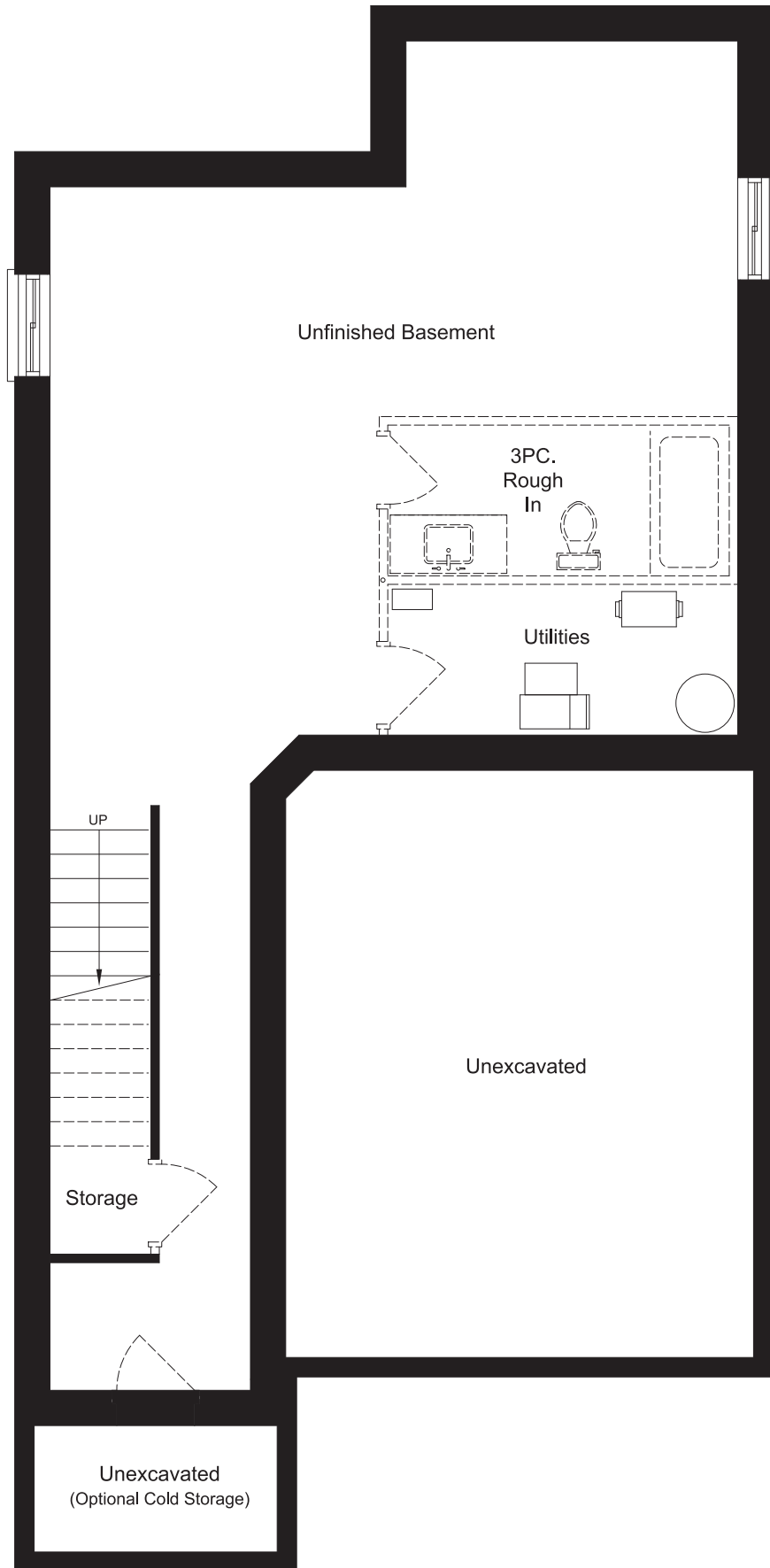
* if upgraded to finish

JACKSON
-MEADOWS-



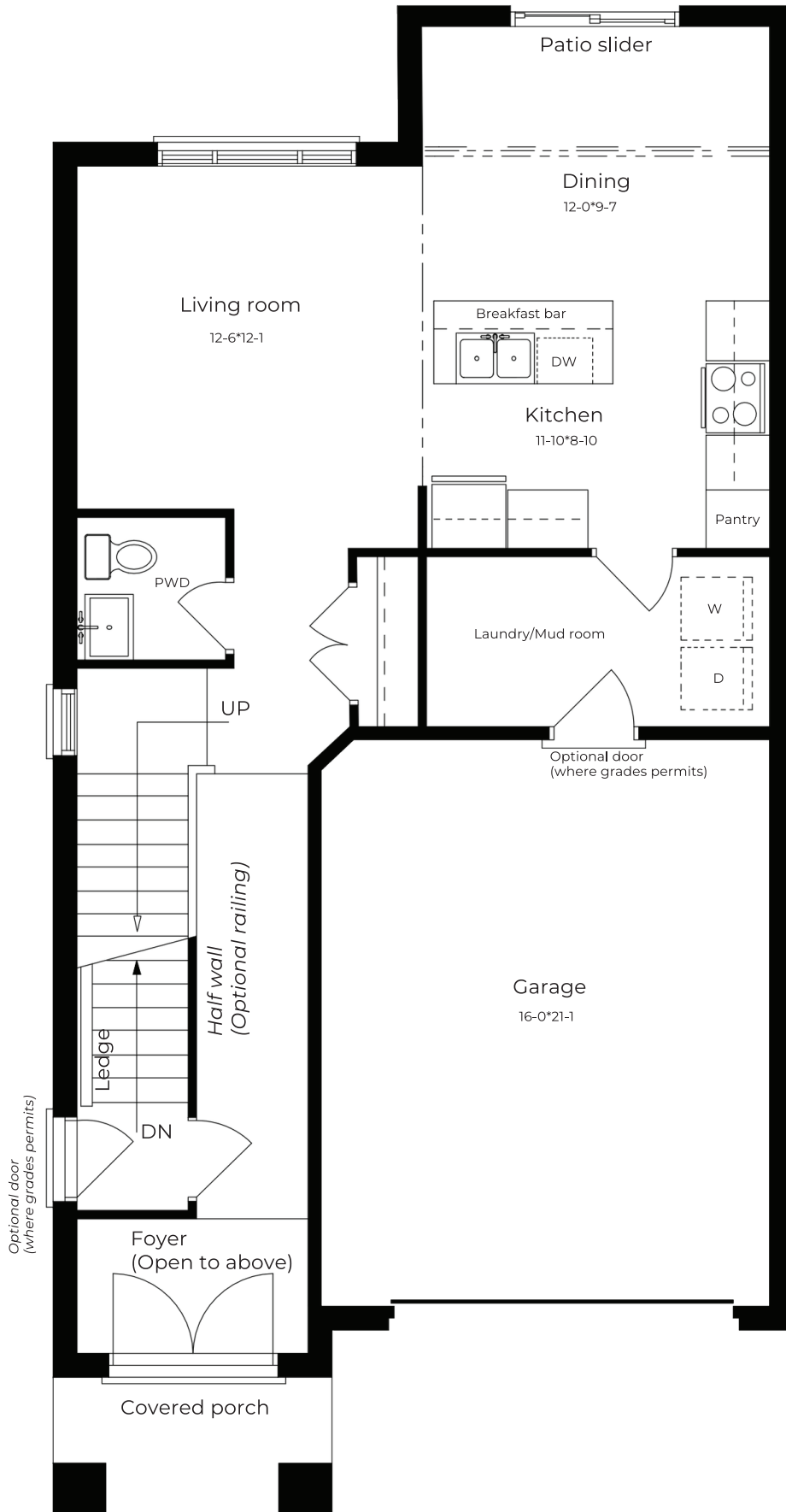
BASEMENT

OPTIONAL FINISHED



BASEMENT

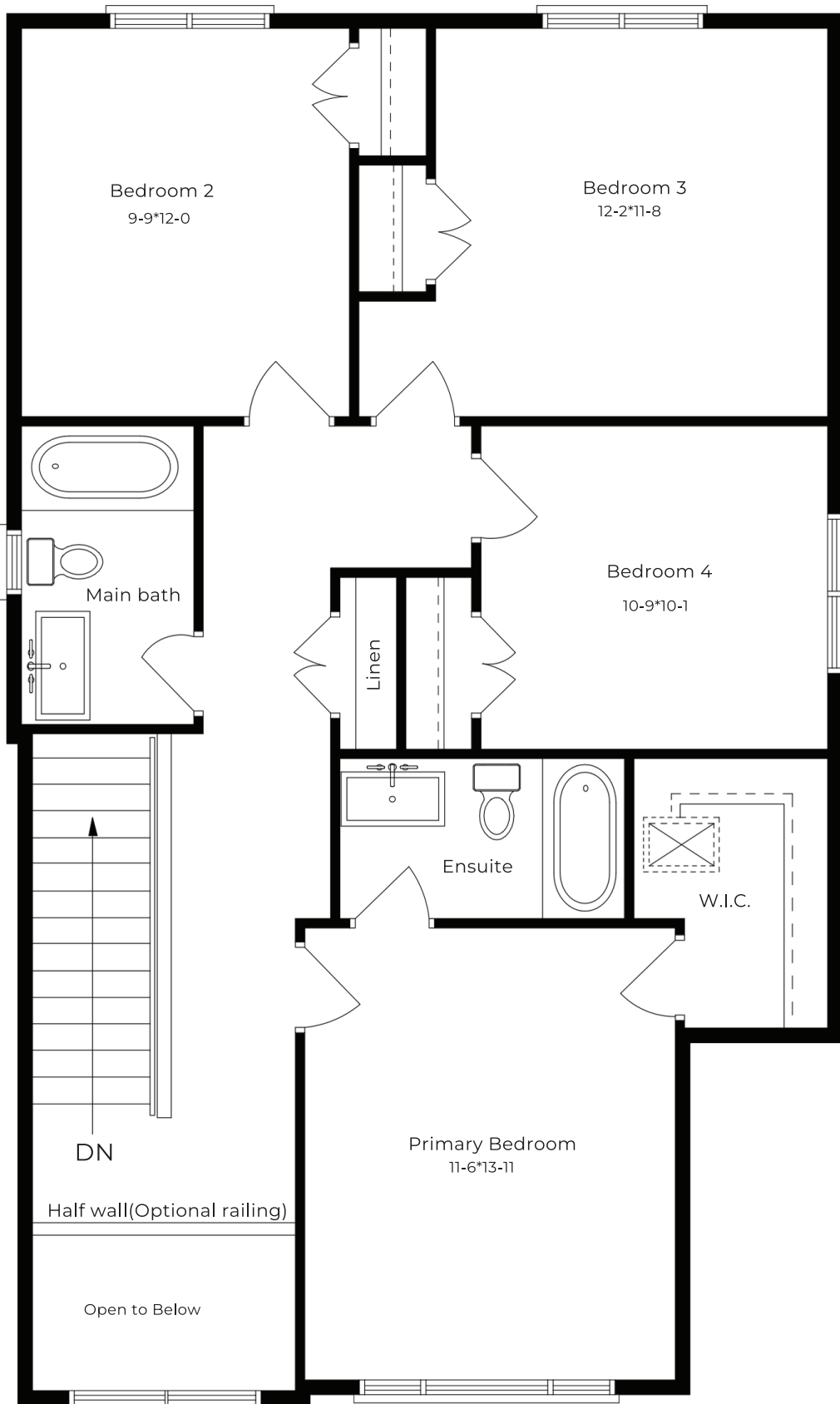
UNFINISHED



MAIN FLOOR

ELEVATION A

ELEVATION B



SECOND FLOOR

ELEVATION A

ELEVATION B