

Shree 2700

2,700 sqft
4 bed + 2.5 bath
4 bed + 3.5 bath
(with optional configuration)



Shree Homes inc
LONDON • ONTARIO



Elevation A



9' Main Floor Ceiling Height



Full Suite of Interior Finishes



Upscale Stone & Stucco Exterior Available



Clean + Modern Build Design

- * 4 Bedrooms
- * 2.5 or 3.5 Bathrooms
- * Basement Rough-in

- * His & Hers Closets
- * Luxury Vinyl
- * Unique Configuration

- * Double Garage
- * Master Bed Ensuite
- * Kitchen Island



Shree Homes inc
LONDON • ONTARIO

519.601.6761

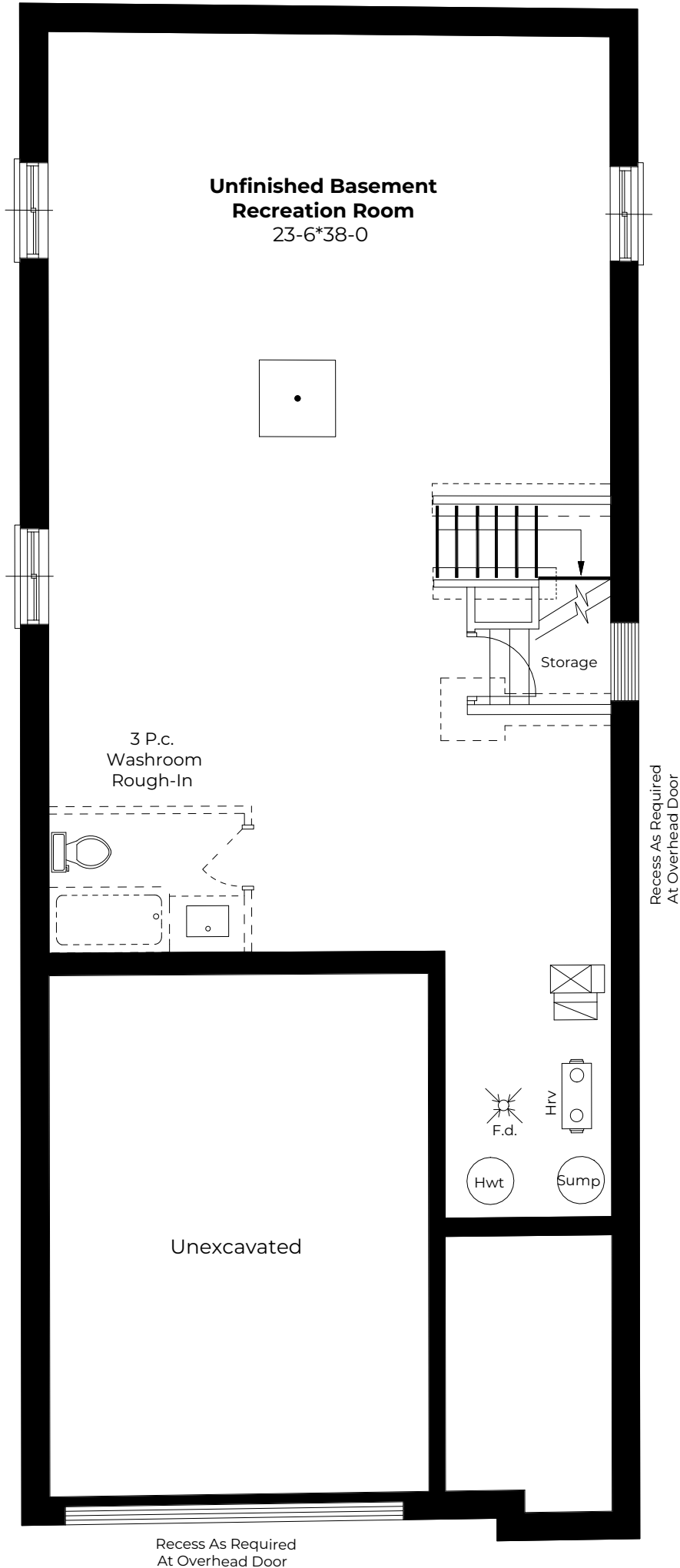
| shreehomes.ca

| sales@shreehomes.ca

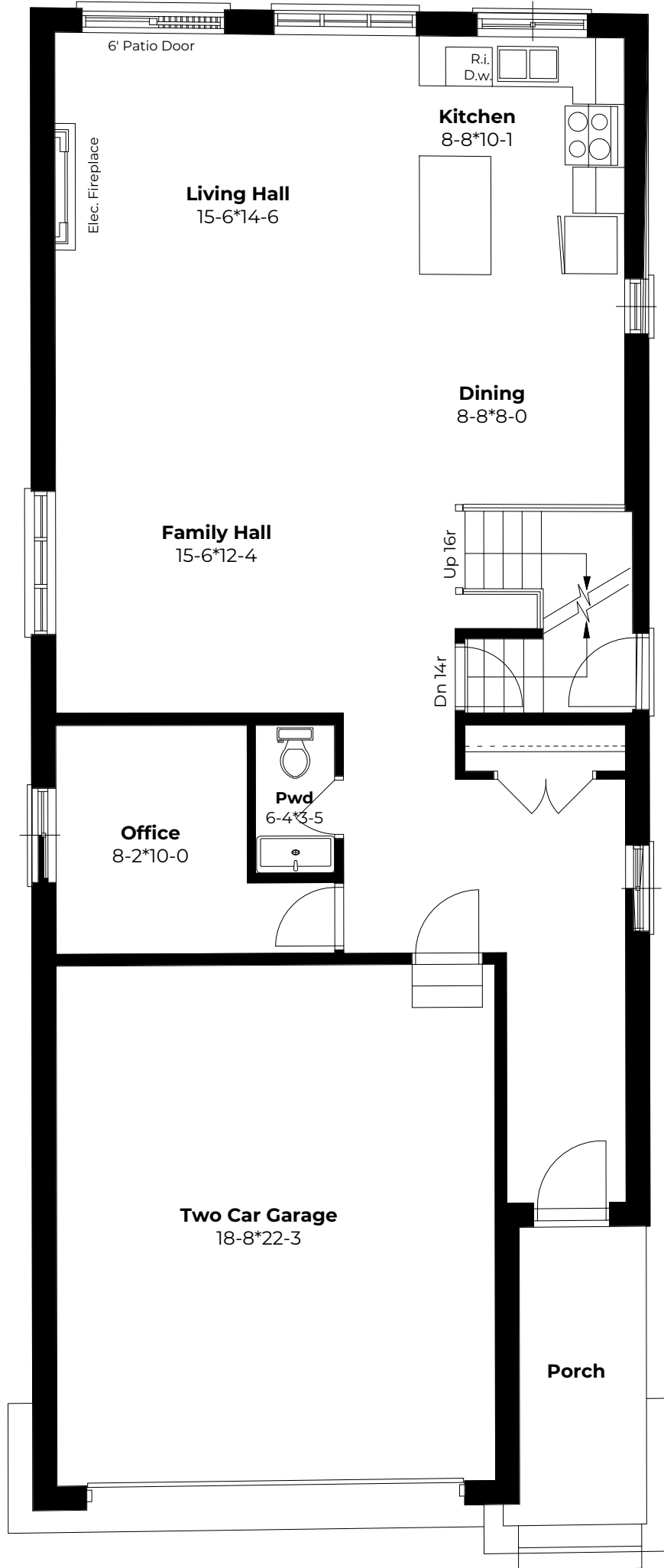
All drawings are for presentation purposes only. Actual size and product may vary. All measurements are approximate and subject to change without notice. Actual usable floor space may differ from stated floor area. Columns, bulkheads and boxouts may not be shown.

* if upgraded to finish

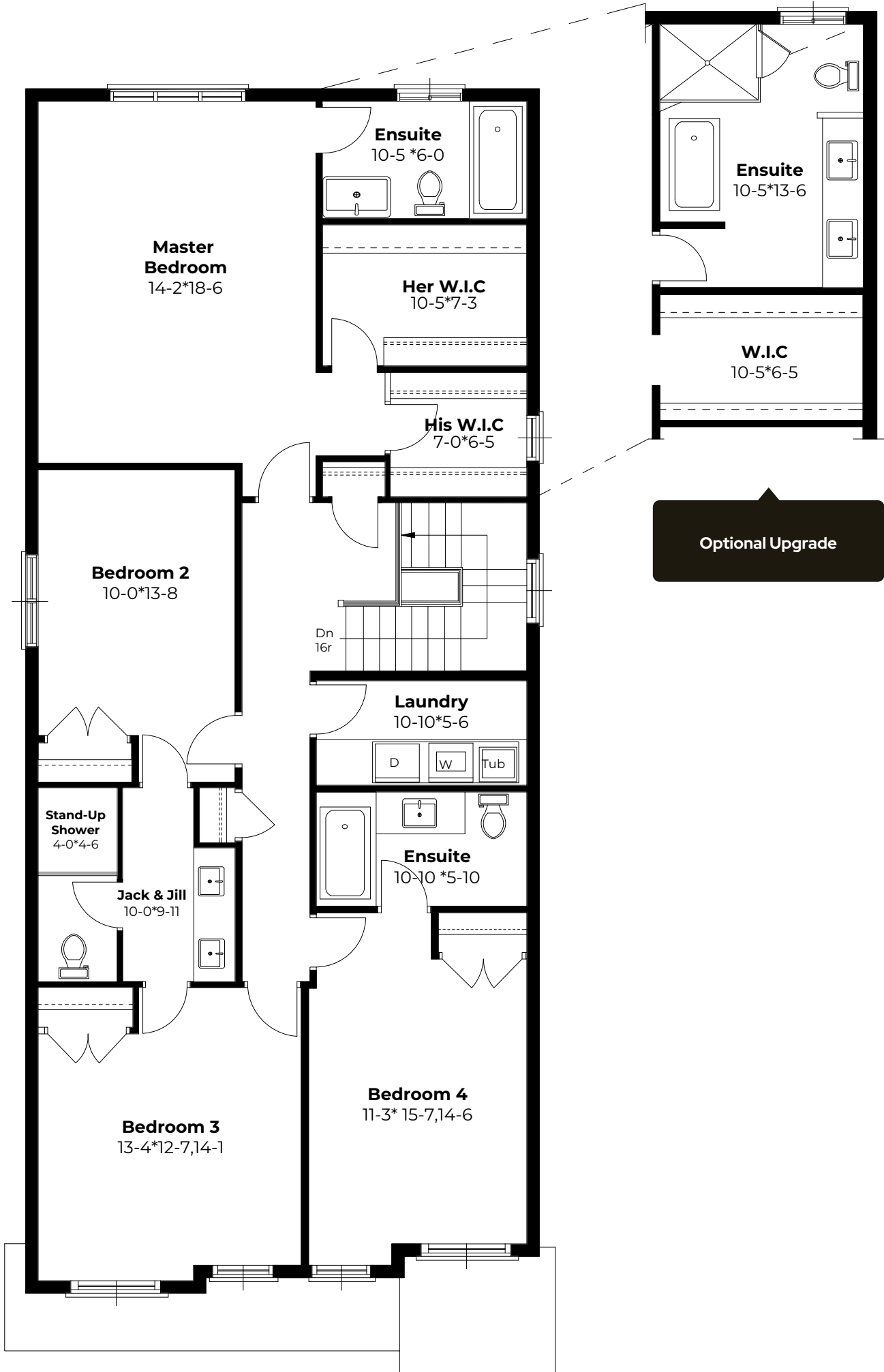

JACKSON
MEADOWS



BASEMENT



MAIN FLOOR



SECOND FLOOR