

Shree **2394**

2,394 sqft
4 bed + 3.5 bath
(with optional finished basement)



Shree Homes inc
LONDON • ONTARIO



Elevation A



9' Main Floor Ceiling Height



Full Suite of Interior Finishes



Upscale Stone & Stucco Exterior Available



Clean + Modern Build Design

- * 4 Bedrooms
- * 3.5 Bathrooms
- * Basement Rough-in

- * Double Car Garage
- * Luxury Vinyl
- * Covered Porch

- * One Elevation
- * Master Bed Ensuite
- * Kitchen Island

* Optional Finished Basement adds a 5th bedroom and 3-piece bathroom



Shree Homes inc
LONDON • ONTARIO

519.601.6761

| shreehomes.ca

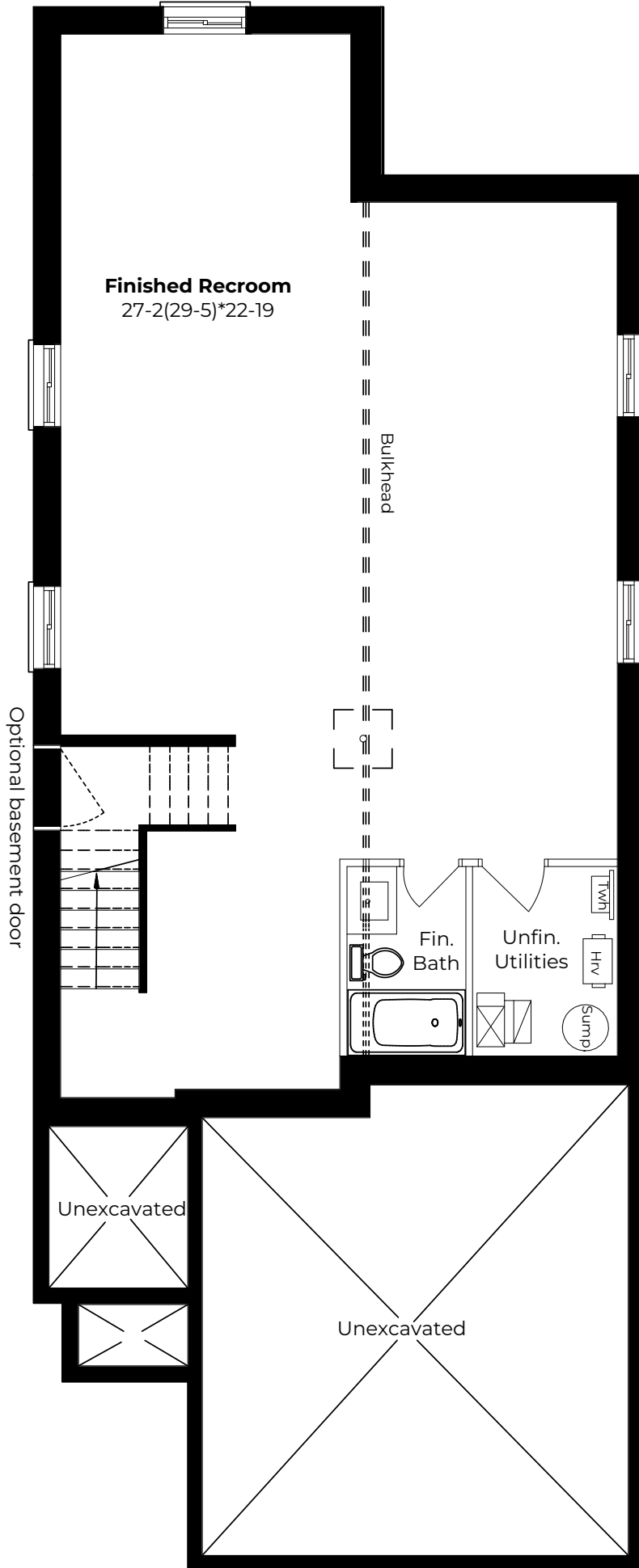
| sales@shreehomes.ca

All drawings are for presentation purposes only. Actual size and product may vary. All measurements are approximate and subject to change without notice. Actual usable floor space may differ from stated floor area. Columns, bulkheads and boxouts may not be shown.

* if upgraded to finish

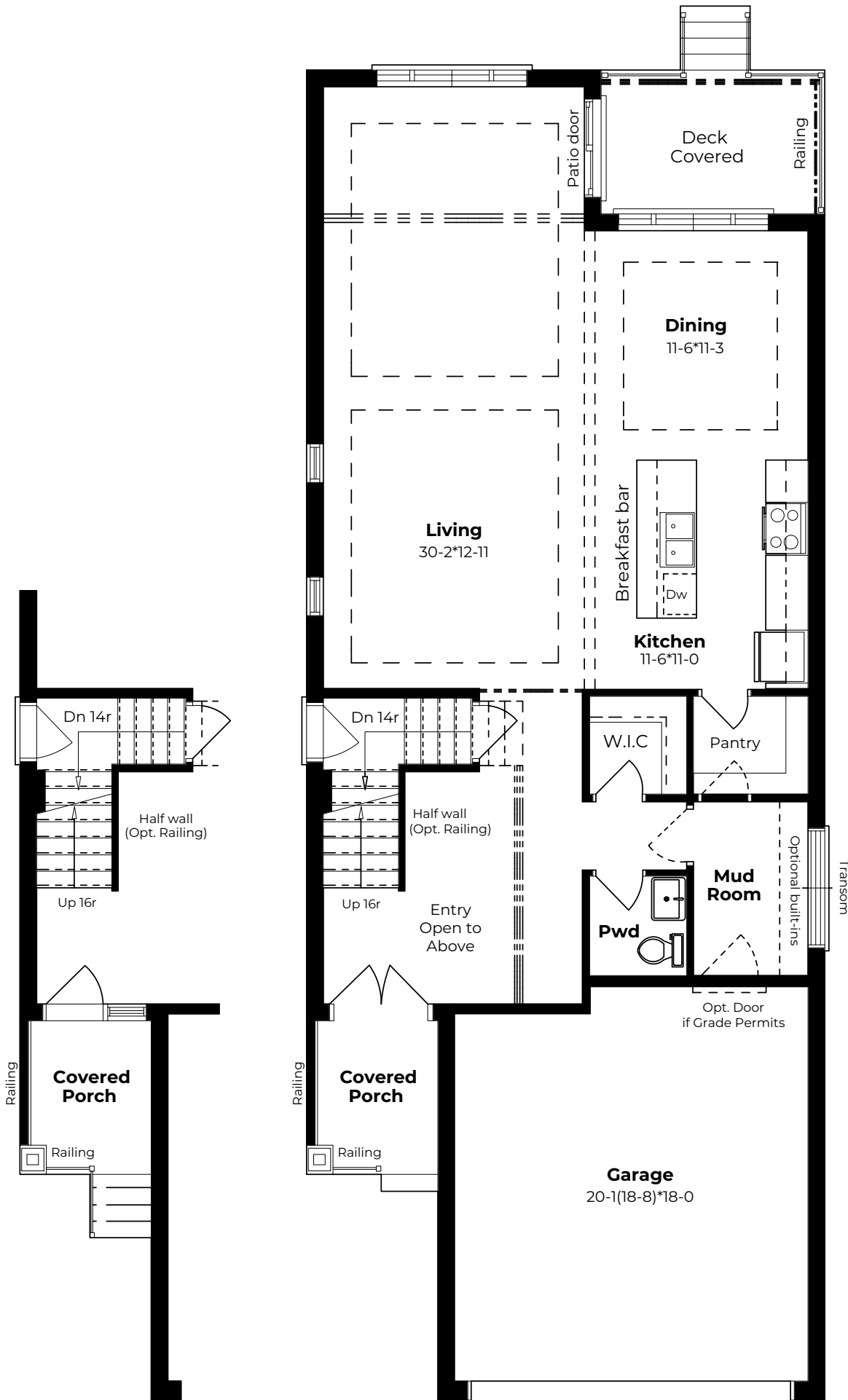


JACKSON
-MEADOWS-



BASEMENT

OPTIONAL FINISHED

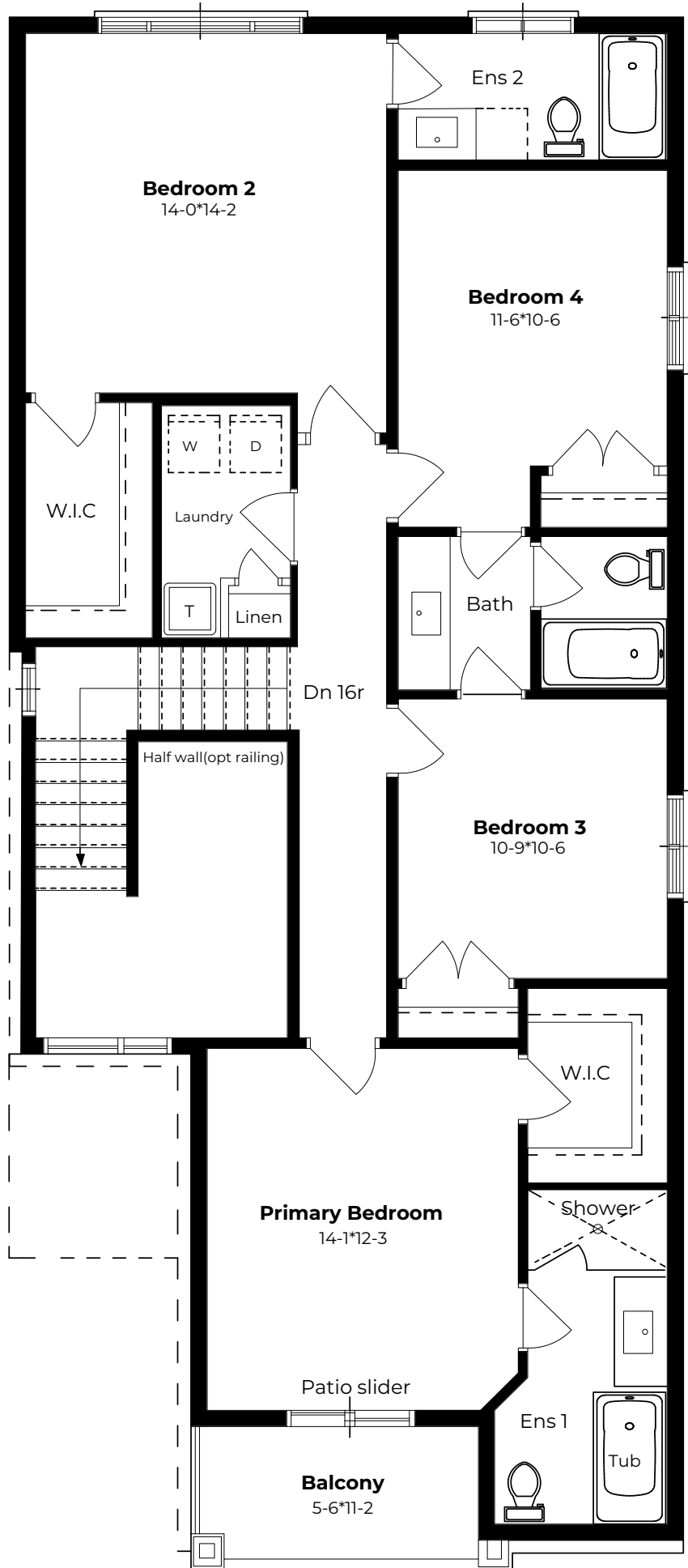


MAIN FLOOR

VARIATION B

MAIN FLOOR

VARIATION A



SECOND FLOOR

ELEVATION A