

# Shree 2350

2,350 sqft  
3 bed + 3.5 bath  
4 bed + 2.5 bath  
*(with optional configuration)*



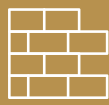
Shree Homes inc  
LONDON • ONTARIO



Elevation **A+B**



Clean + Modern  
Build Design



Upscale Stone & Stucco  
Exterior Available



9' Main Floor  
Ceiling Height



Full Suite of  
Interior Finishes



Side View

- \* 3 or 4 Bedrooms
- \* 2.5 or 3.5 Bathrooms
- \* Basement Rough-in
- \* Side Entrance Garage
- \* Luxury Vinyl
- \* Unique Configuration
- \* Two Elevations
- \* Master Bed Ensuite
- \* Kitchen Island



Shree Homes inc  
LONDON • ONTARIO

519.601.6761

| [shreehomes.ca](http://shreehomes.ca)

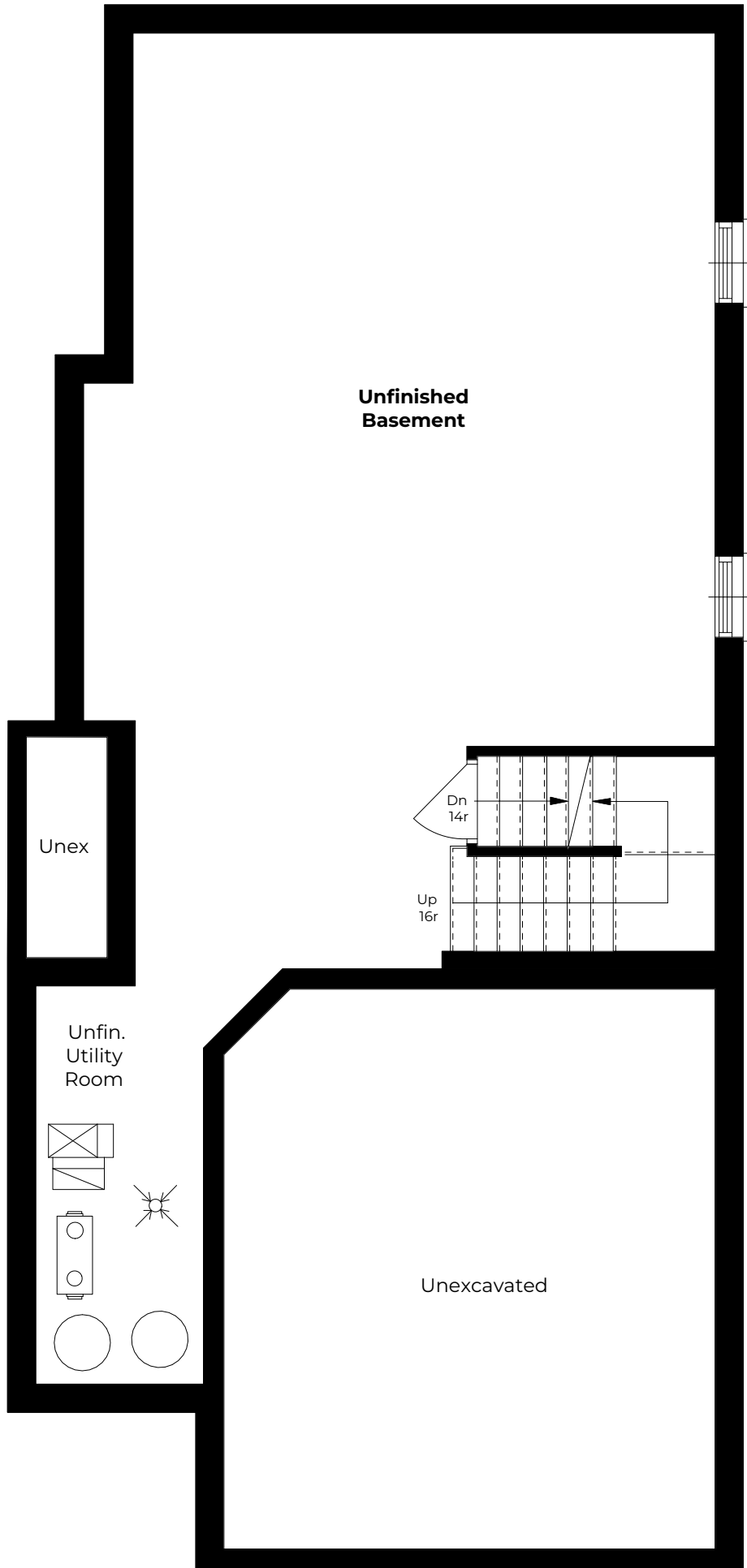
| [sales@shreehomes.ca](mailto:sales@shreehomes.ca)

All drawings are for presentation purposes only. Actual size and product may vary. All measurements are approximate and subject to change without notice. Actual usable floor space may differ from stated floor area. Columns, bulkheads and boxouts may not be shown.

\* if upgraded to finish



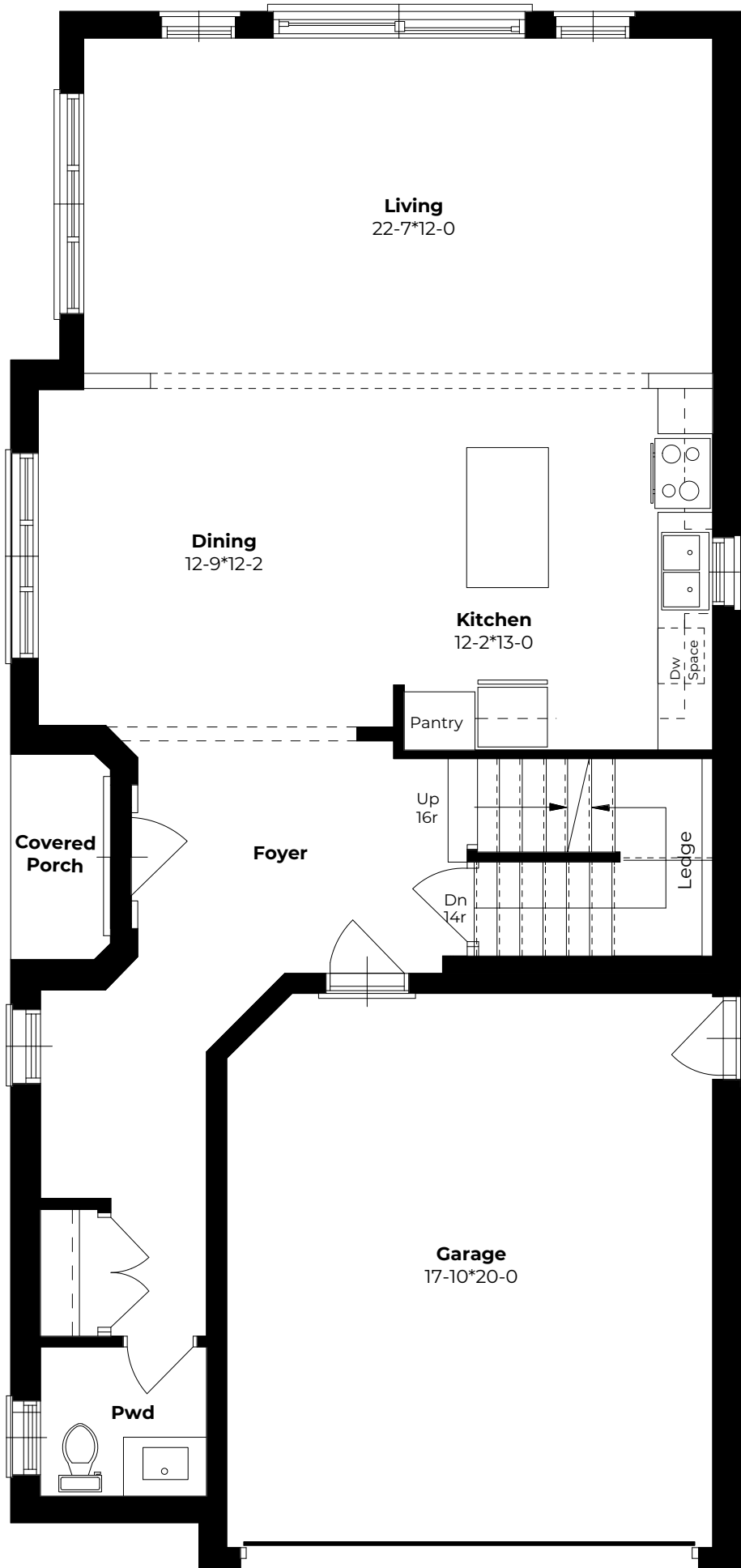
JACKSON  
-MEADOWS-



# BASEMENT

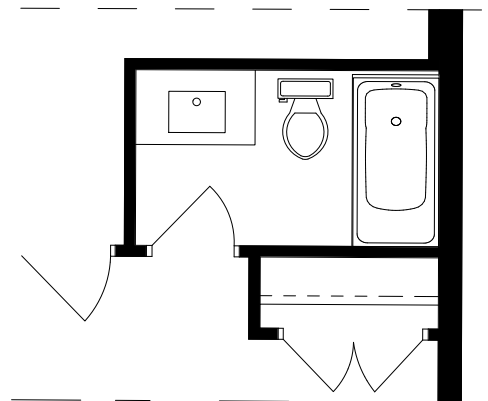
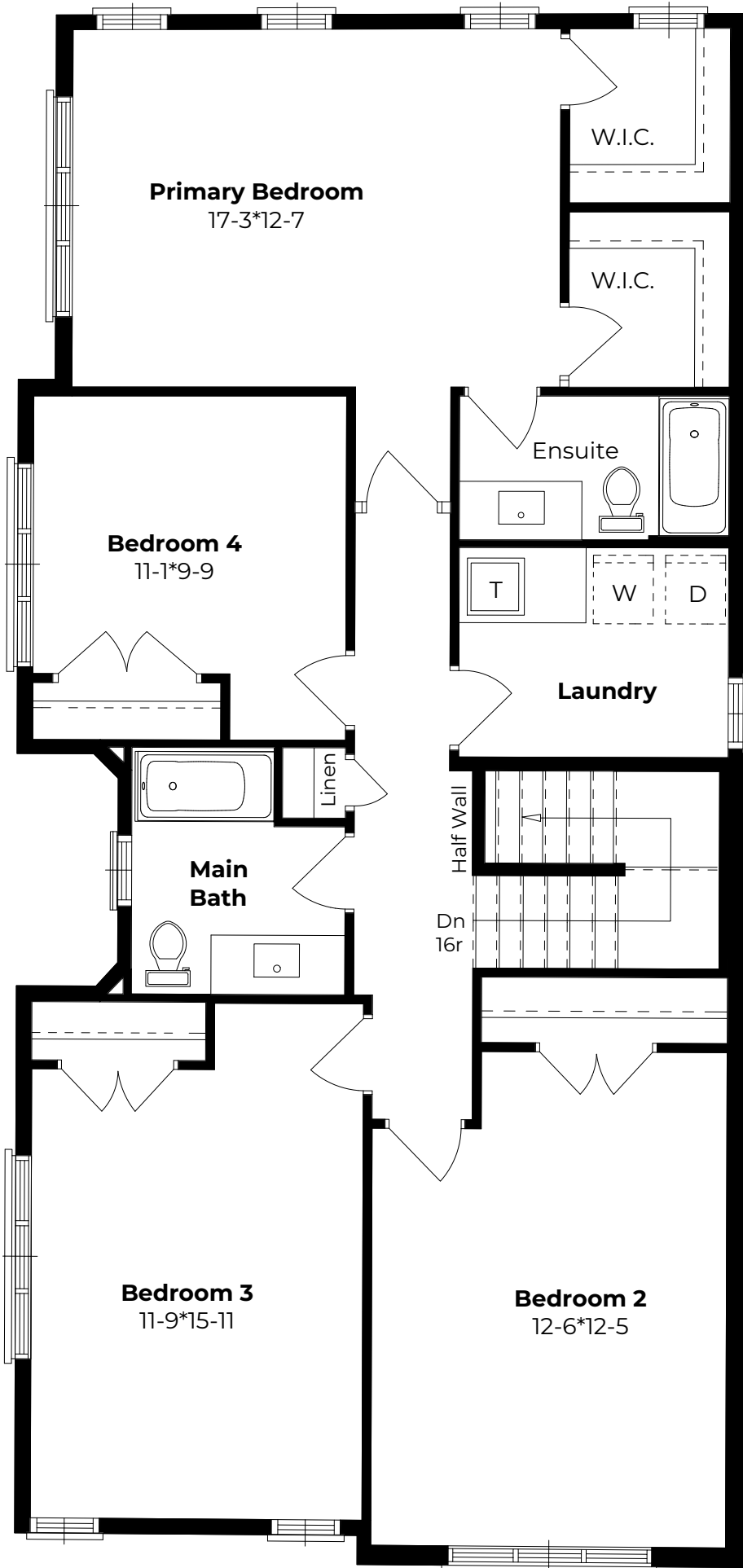
ELEVATION A

ELEVATION B



**MAIN FLOOR**

ELEVATION A      ELEVATION B



Optional Upgrade

**SECOND FLOOR**

ELEVATION A      ELEVATION B