

# Shree 1854

1,854 sqft  
4 bed + 3.5 bath



Shree Homes inc  
LONDON • ONTARIO



Elevation A



Clean + Modern  
Build Design



Upscale Stone & Stucco  
Exterior Available



9' Main Floor  
Ceiling Height



Full Suite of  
Interior Finishes



Elevation B

- \* 4 Bedrooms
- \* 3.5 Bathrooms
- \* Basement Rough-in
- \* 1.5 Car Garage
- \* Luxury Vinyl
- \* Covered Porch
- \* Two Elevations
- \* Master Bed Ensuite
- \* Kitchen Island

\* Optional Finished Basement adds a 5<sup>th</sup> bedroom and 3 piece bathroom



Shree Homes inc  
LONDON • ONTARIO

519.601.6761

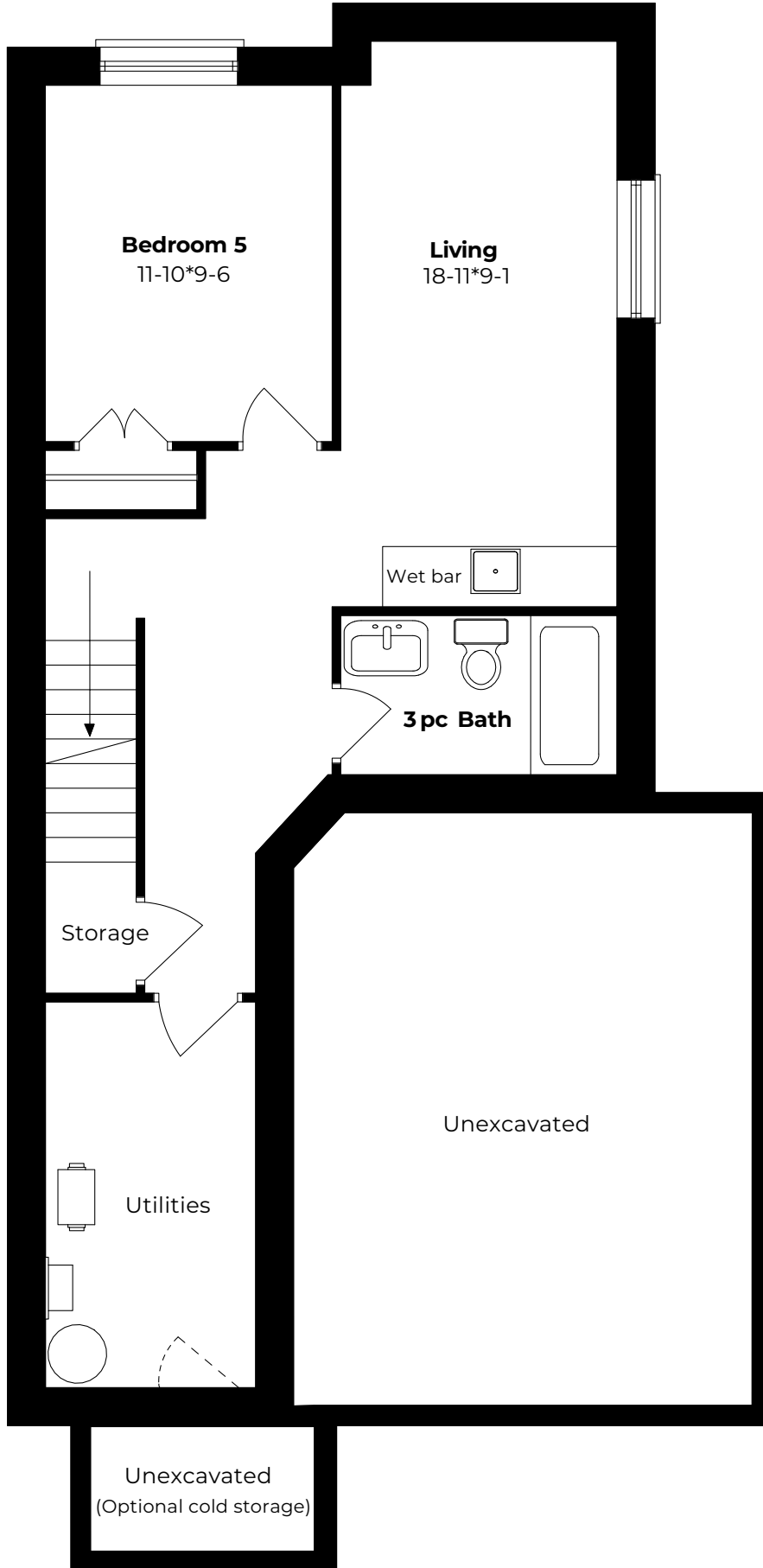
| shreehomes.ca

| sales@shreehomes.ca

All drawings are for presentation purposes only. Actual size and product may vary. All measurements are approximate and subject to change without notice. Actual usable floor space may differ from stated floor area. Columns, bulkheads and boxouts may not be shown.

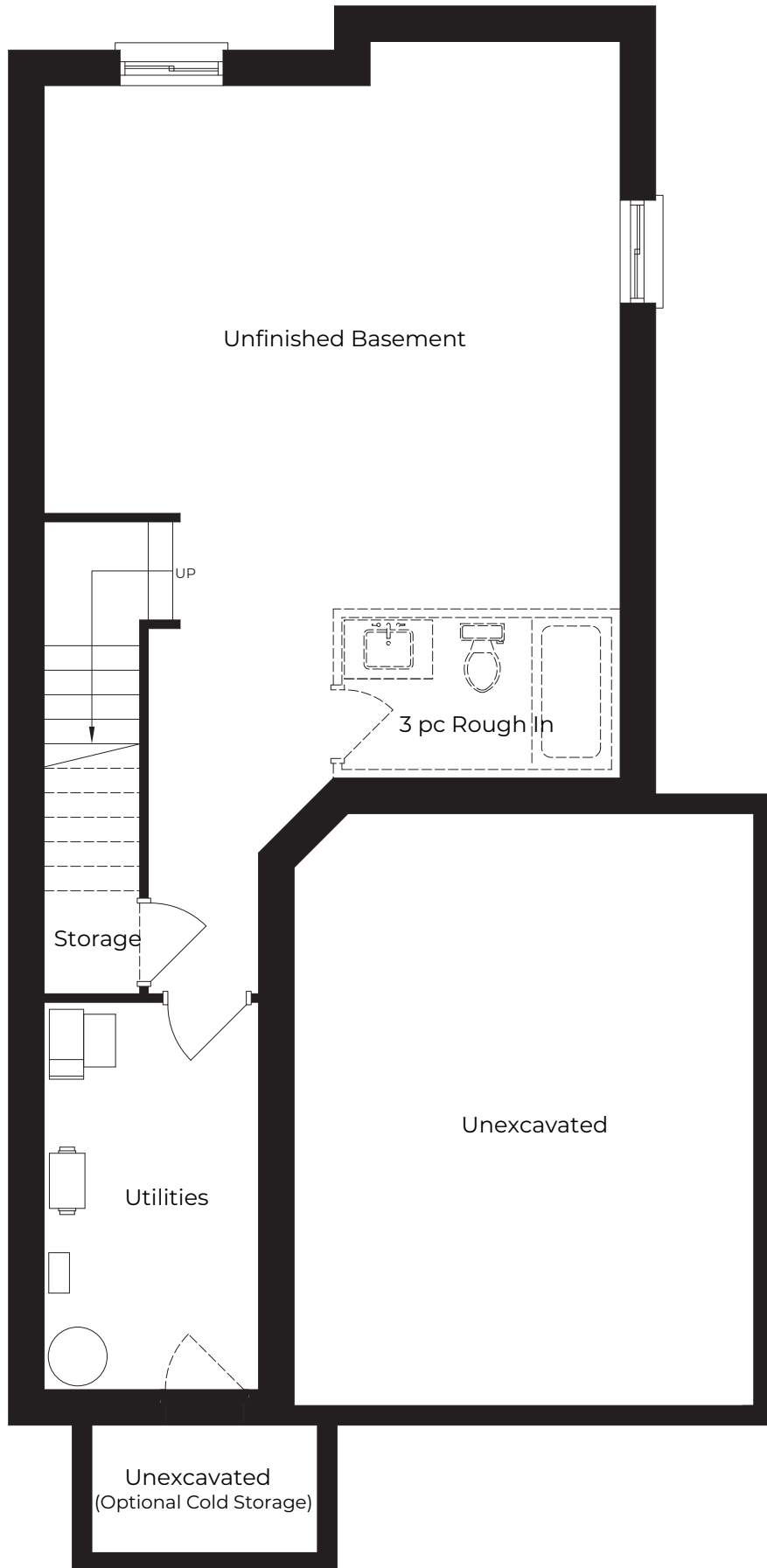
\* if upgraded to finish

JACKSON  
-MEADOWS-



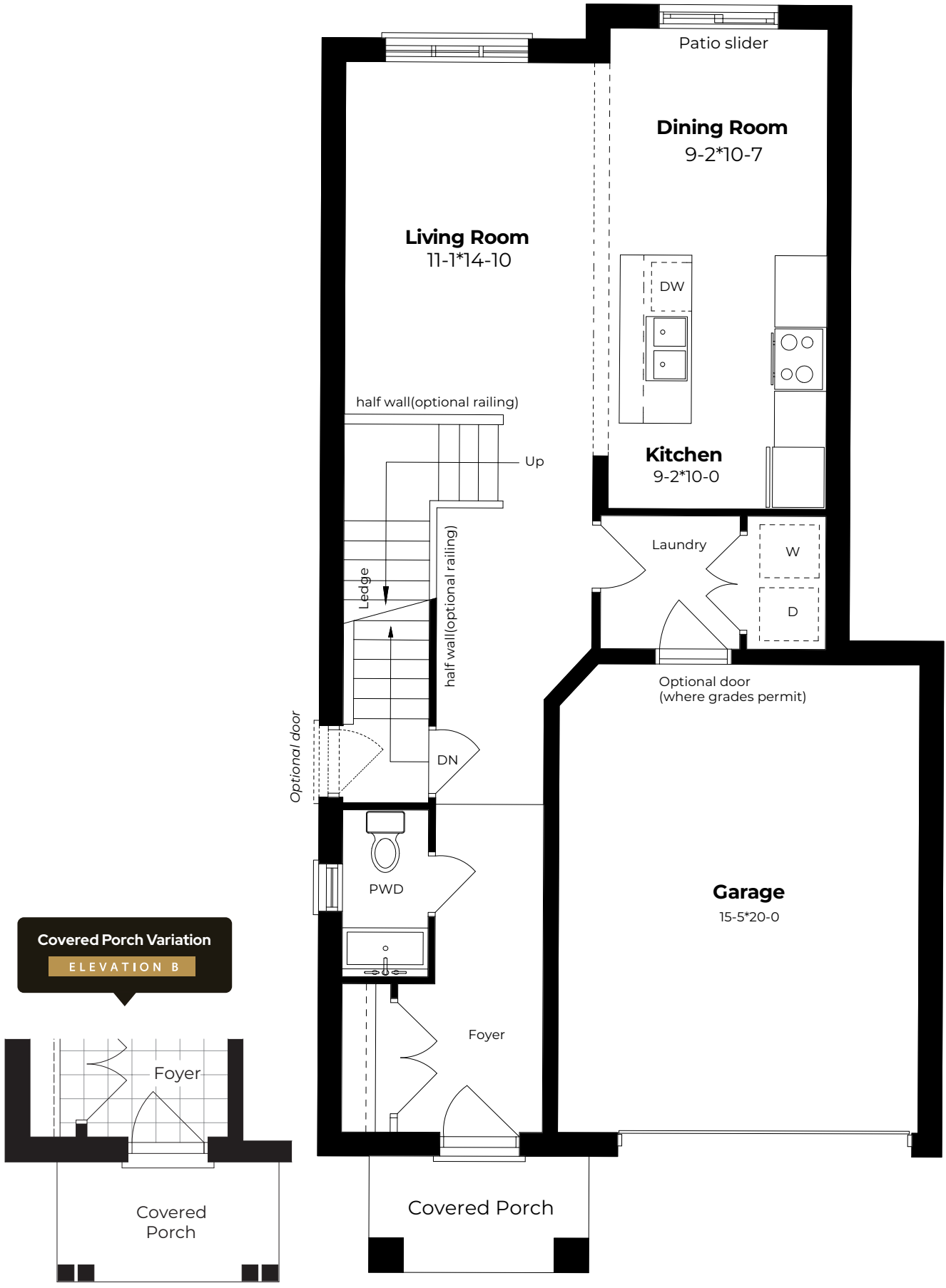
# BASEMENT

OPTIONAL FINISHED



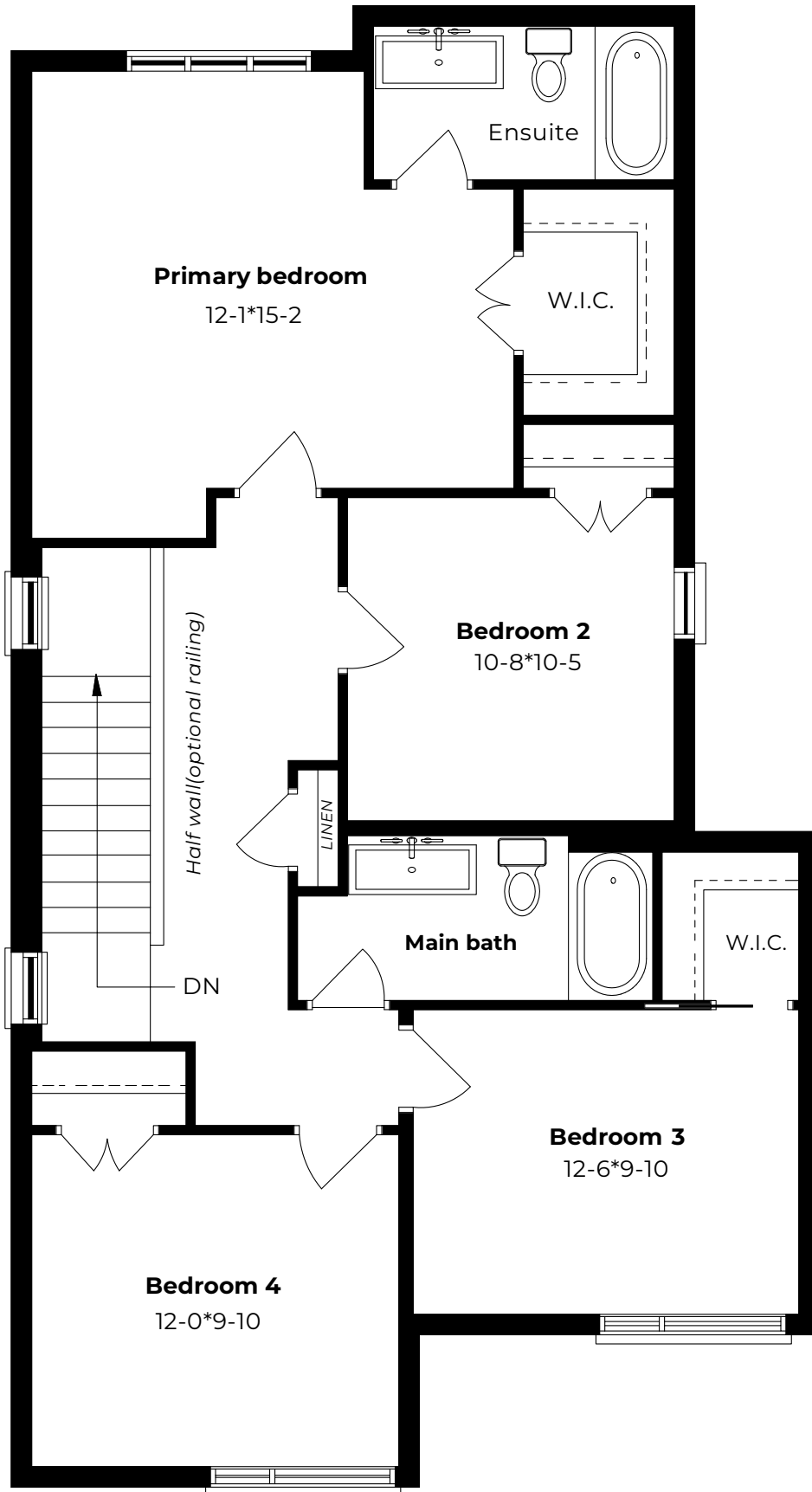
## BASEMENT

UNFINISHED



**MAIN FLOOR**

**ELEVATION A**      **ELEVATION B**



## SECOND FLOOR

ELEVATION A

ELEVATION B