

Shree **1821**

1,821 sqft
4 bed + 2.5 bath



Shree Homes inc
LONDON • ONTARIO



Elevation **A**



9' Main Floor
Ceiling Height



Full Suite of
Interior Finishes



Upscale Stone & Stucco
Exterior Available



Clean + Modern
Build Design

- * 4 Bedrooms
- * 2.5 Bathrooms
- * Basement Rough-in

- * Master Bedroom Ensuite
- * Walk In Closet
- * Luxury Vinyl

- * Single Garage
- * Kitchen Island
- * Upstairs Laundry



Shree Homes inc
LONDON • ONTARIO

519.601.6761

| shreehomes.ca

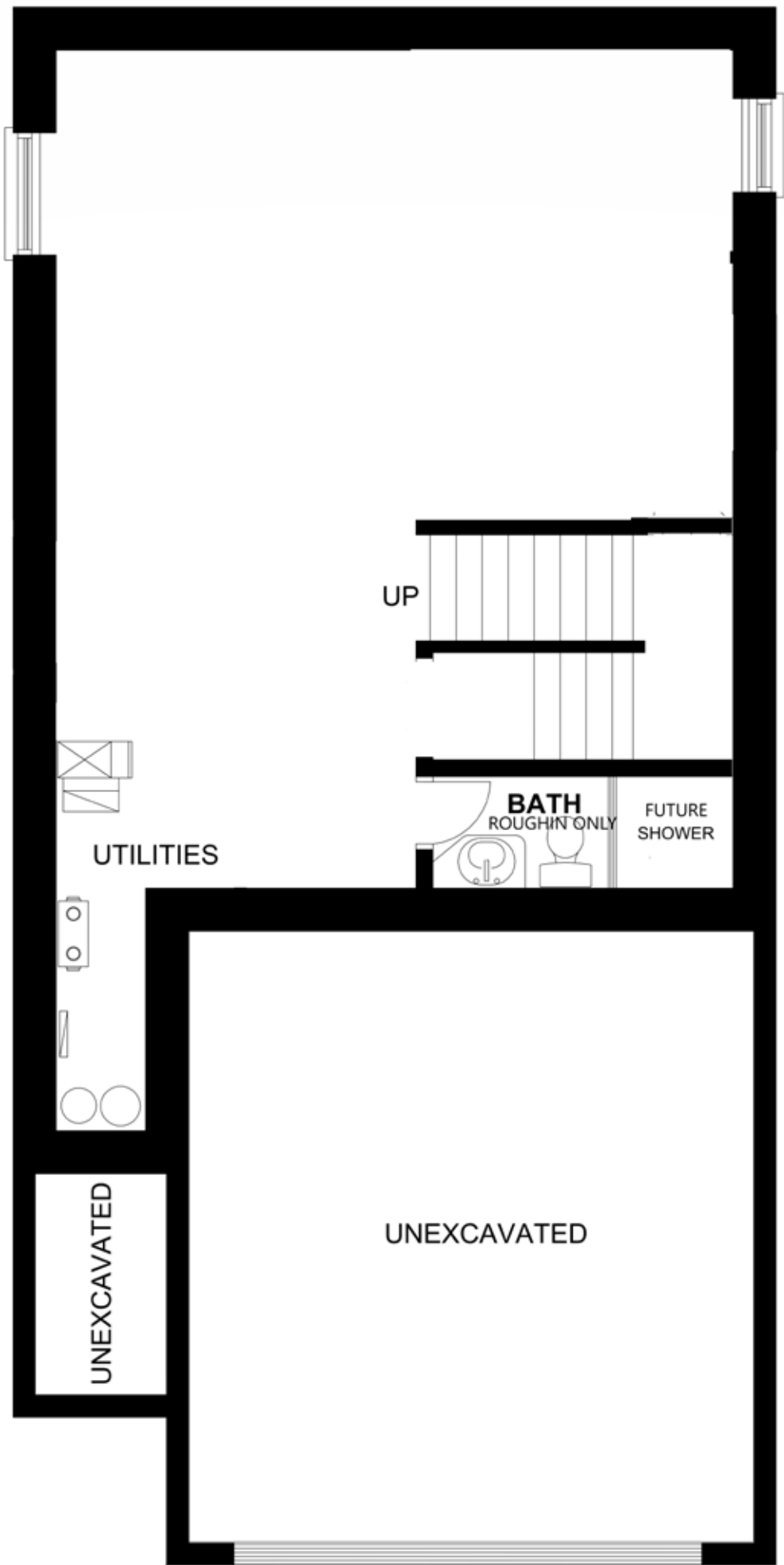
| sales@shreehomes.ca

All drawings are for presentation purposes only. Actual size and product may vary. All measurements are approximate and subject to change without notice. Actual usable floor space may differ from stated floor area. Columns, bulkheads and boxouts may not be shown.

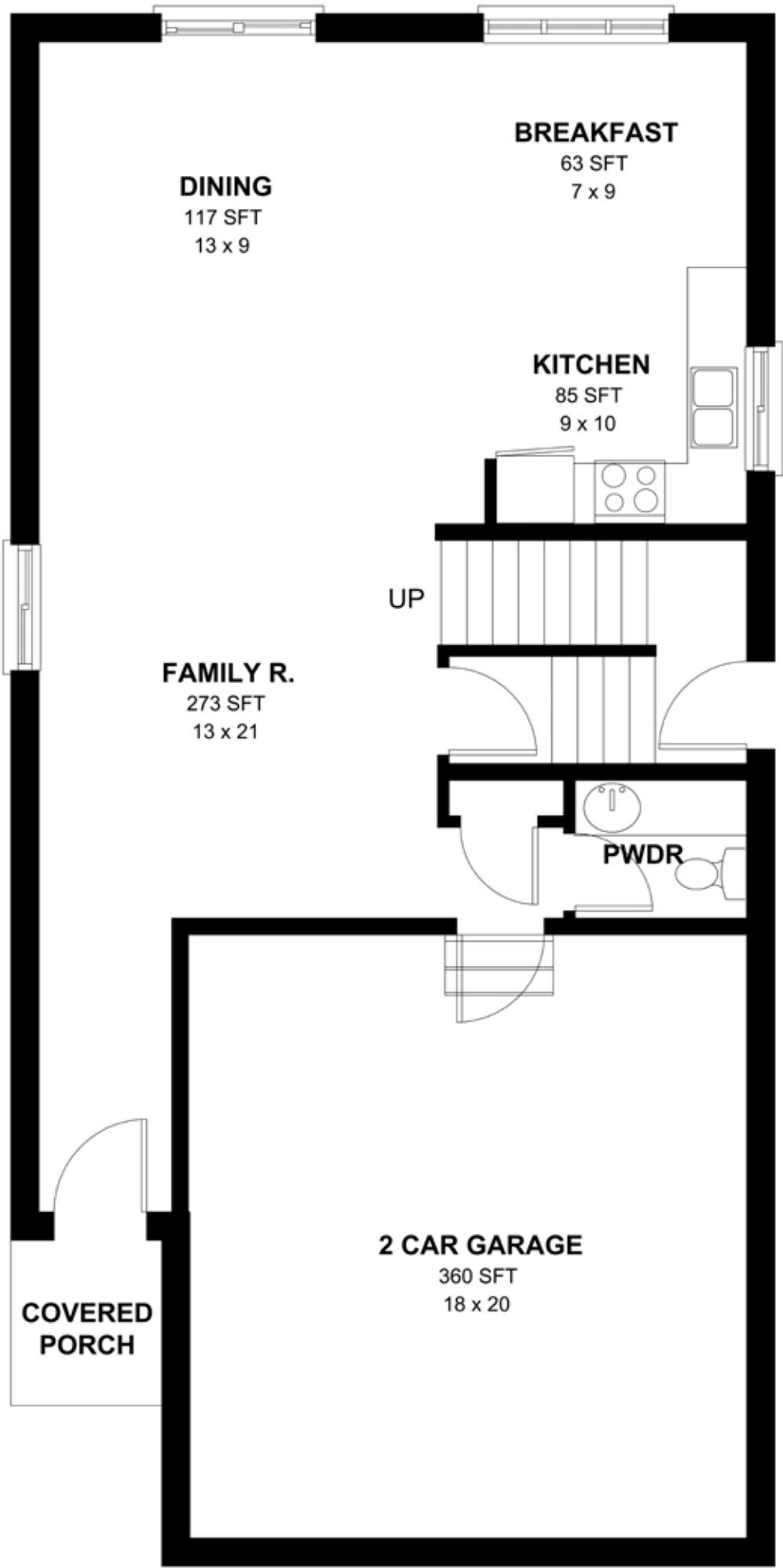
* if upgraded to finish



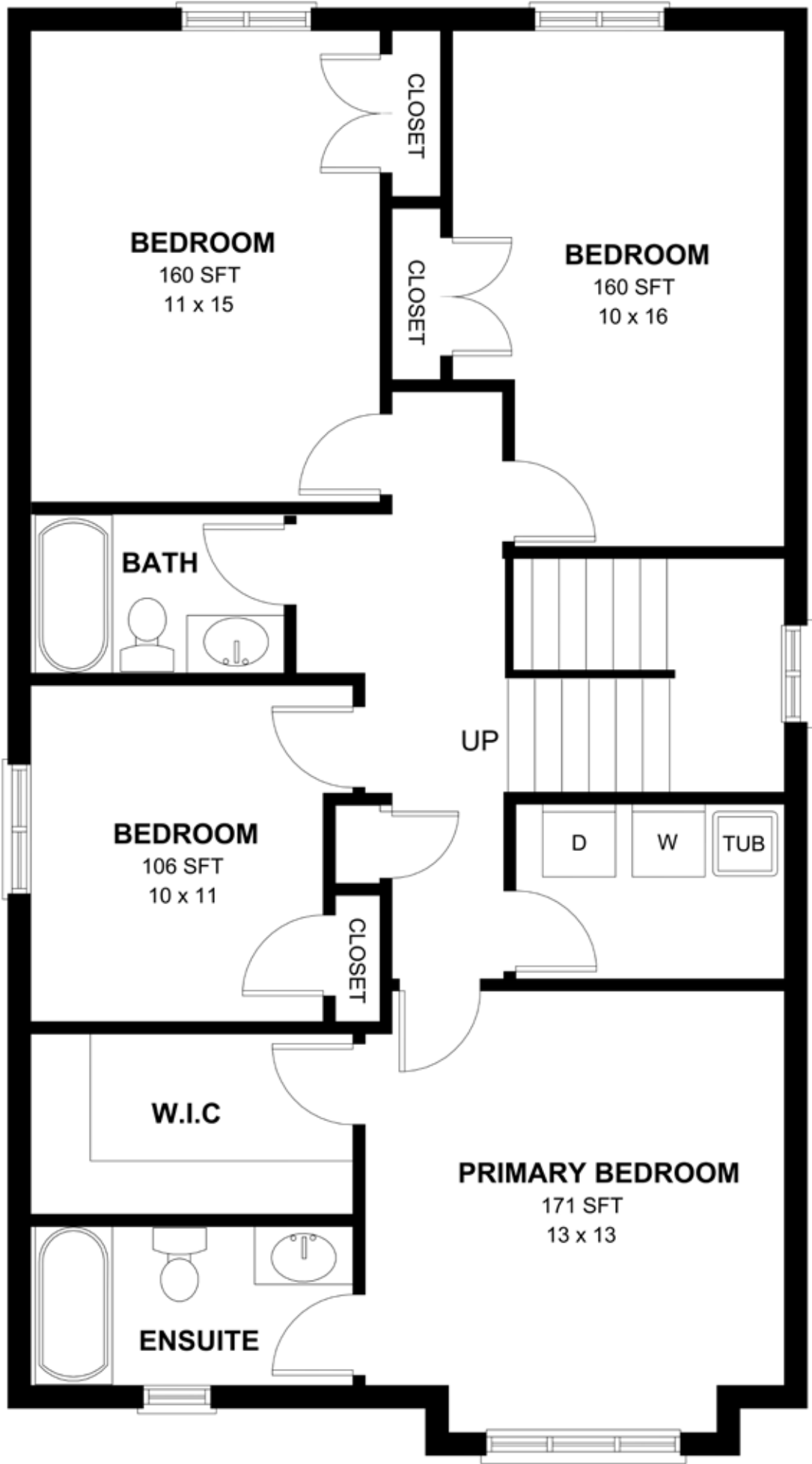
JACKSON
MEADOWS



BASEMENT



MAIN FLOOR



SECOND FLOOR